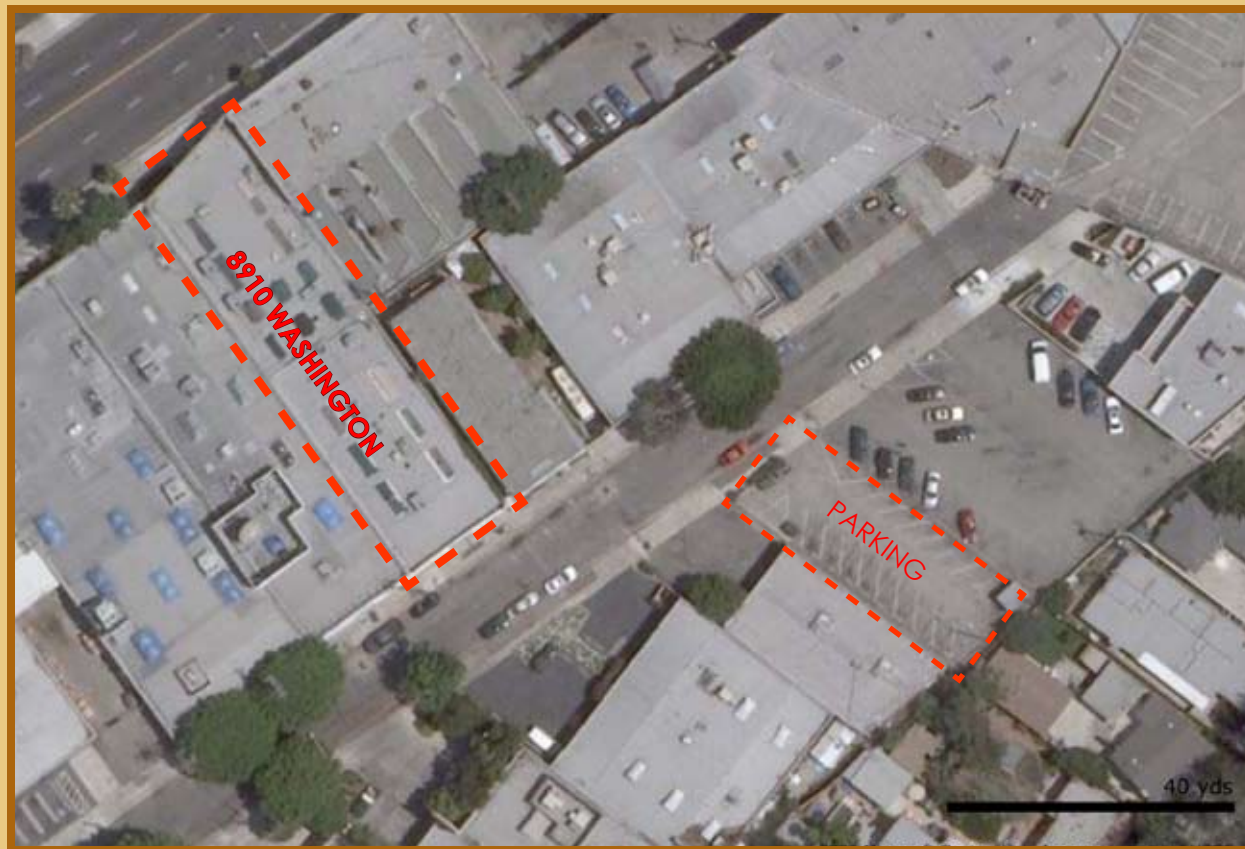


For Lease

8910 WASHINGTON BL, CULVER CITY

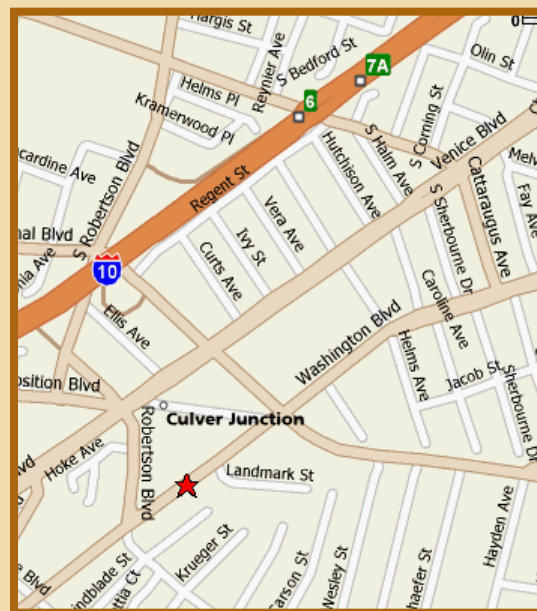


FOR MORE INFORMATION,

CONTACT:
tel. 310/839/3333
fax. 310/839/3382

JONATHAN WOLK, SENIOR ASSOCIATE
jonathan@lancelotcommercial.com

OFFICE LOCATION
8924 LINDBLADE STREET
CULVER CITY, CA 90232



For Lease

8910 WASHINGTON BL, CULVER CITY



GREAT CREATIVE OFFICE SPACE

AVAILABLE SF: 10,000 SF TOTAL BLDG SF: 10,000 SF

FEATURES

- ◆ SANDBLASTED WOOD BOW TRUSS
- ◆ FULLY AIR-CONDITIONED
- ◆ SKYLIGHTS PROVIDE FOR ABUNDANT NATURAL LIGHT
- ◆ CLOSE PROXIMITY TO HAYDEN TRACT AND I-10 FWY
- ◆ CLOSE TO ALL OF THE NEW GREAT RESTAURANTS IN AREA
- ◆ WASHINGTON BLVD FRONTAGE
- ◆ \$ 2.5 MODIFIED GROSS per SF



"Regardless of the professional broker you choose, it is critical to have a broker who is well versed in all aspects of the market in which you are dealing. You will not find a better brokerage company than Lancelot Commercial with this kind of track record."

- Lance Levin, President & Jonathan Wolk, Senior Associate



LANCELOT

COMMERCIAL REAL ESTATE BROKERAGE