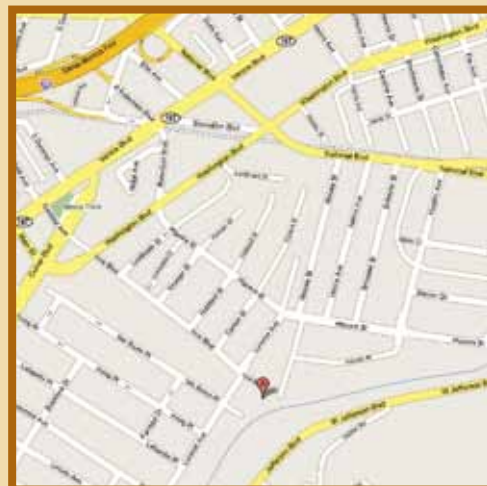
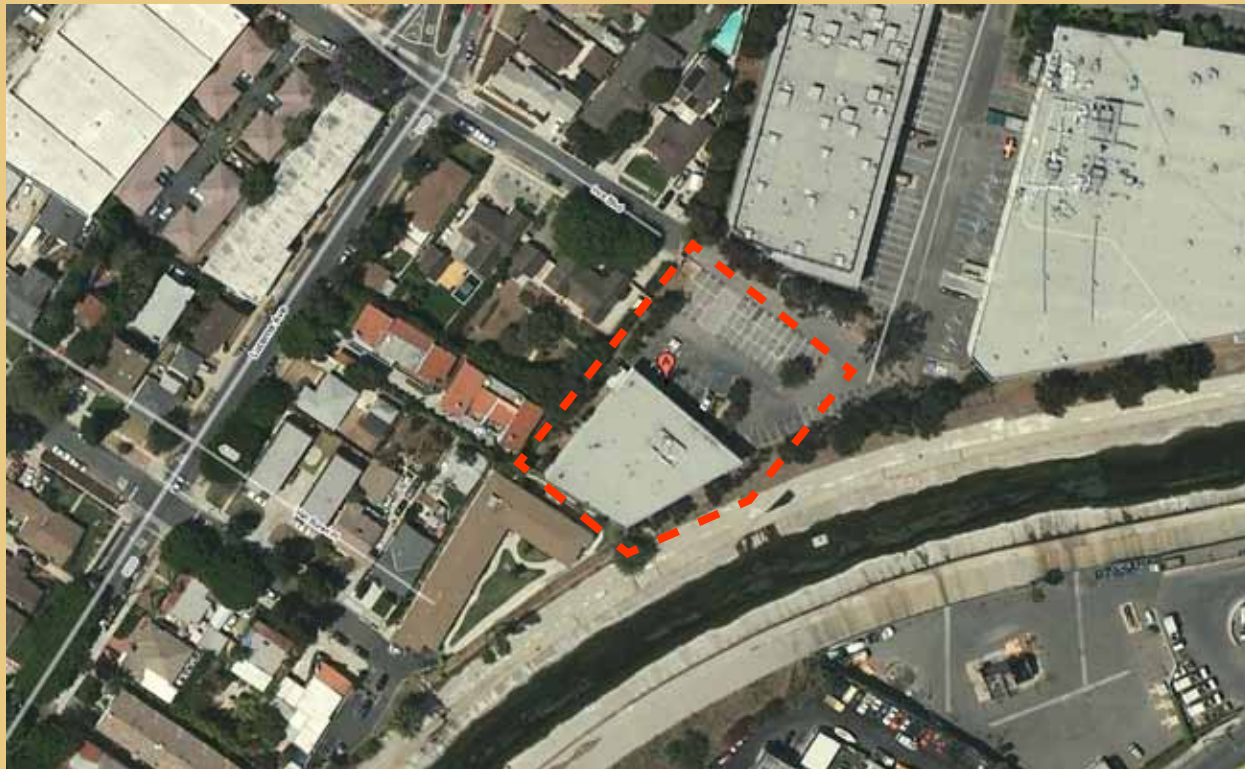


For Lease

8690 Hayden Pl., Culver City, CA



For More Information,

CONTACT:
tel. 310/839/3333
fax. 310/839/3382
www.lancelotcommercial.com

LANCE LEVIN, PRESIDENT
lance@lancelotcommercial.com

OFFICE LOCATION
8924 LINDBLADE STREET
CULVER CITY, CA 90232

NOTE: All measurements are approximate and while the information furnished comes from reliable sources, we assume no liability.
Lance Levin: DRE # 01128388 Jonathan Wolk: DRE# 01228058

"Regardless of the professional broker you choose, it is critical to have a broker who is well versed in all aspects of the market in which you are dealing. You will not find a better brokerage company than Lancelot Commercial with this kind of track record."
- Lance Levin, President & Jonathan Wolk, Senior Associate



For Lease

8690 Hayden Pl., Culver City, CA



Rare Freestanding High Image Building

AVAILABLE SF: 11,200 SF

LAND SF: 25,700

FEATURES

- Rare freestanding high image building in first class Culver City Hayden Industrial Park.
- Private and secure cul-de-sac location with great parking.
- Neighbors include: Sony Studios, LA Times, Ogilvy & Mather, and Smashbox.
- Sprinklers
- 24' Clear height
- Ground level and Dock hi loading
- 6 Blocks to 10 Freeway at Robertson
- 2 Miles to 405 Freeway at Jefferson
- For Lease: \$1.25 NNN



LANCELOT
COMMERCIAL INDUSTRIAL BROKERAGE