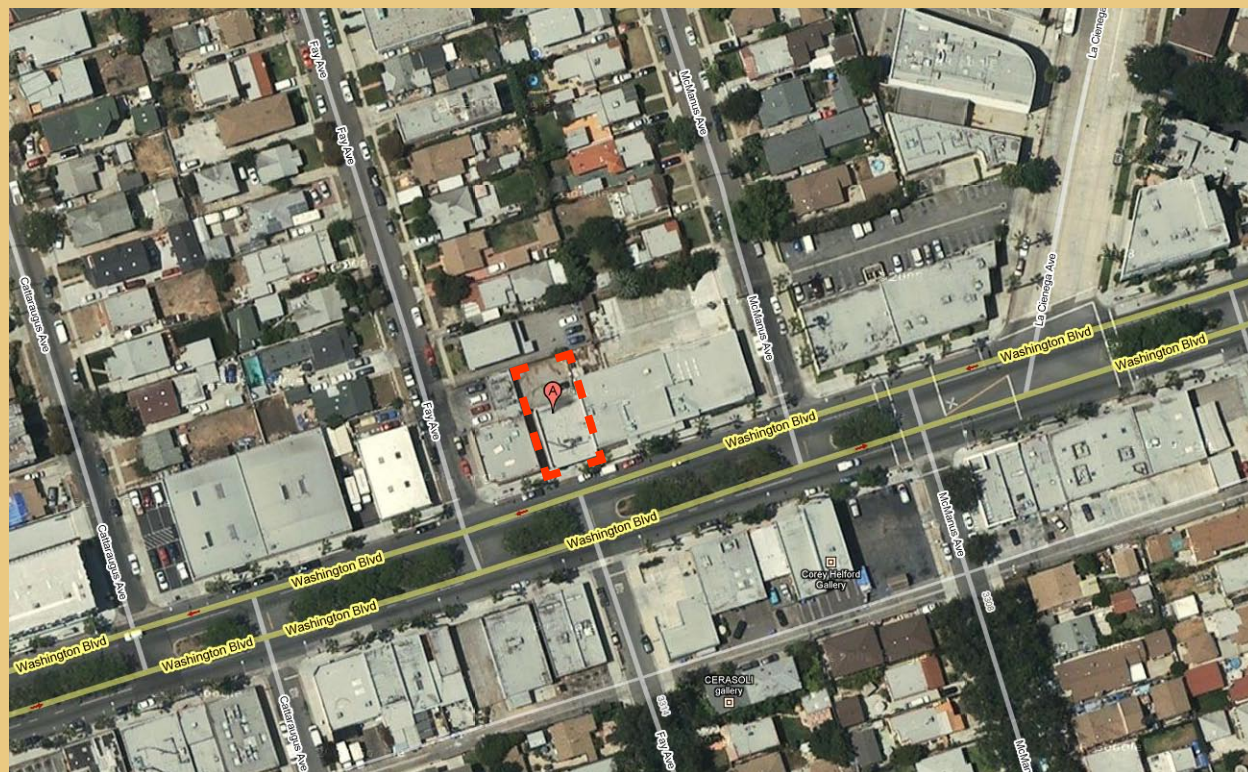


For Lease

8537 Washington Blvd. Culver City CA



For More Information,

CONTACT:
tel. 310/839/3333
fax. 310/839/3382
www.lancelotcommercial.com

LANCE LEVIN, PRESIDENT
lance@lancelotcommercial.com

OFFICE LOCATION
8924 LINDBLADE STREET
CULVER CITY, CA 90232

NOTE: All measurements are approximate and while the information furnished comes from reliable sources, we assume no liability.
Lance Levin: DRE # 01128388 Jonathan Wolk: DRE# 01228058



"Regardless of the professional broker you choose, it is critical to have a broker who is well versed in all aspects of the market in which you are dealing. You will not find a better brokerage company than Lancelot Commercial with this kind of track record."
- Lance Levin, President & Jonathan Wolk, Senior Associate

For Lease

8537 Washington Blvd. Culver City CA



Art Gallery Space in Culver City Art District

AVAILABLE SF: 2,000 SF

LAND SF: 4,500

FEATURES

- Completely renovated creative Art Gallery space
- Freestanding building with major boulevard exposure
- New storefronts
- New restrooms
- Polished sealed floors
- New Air conditioning/heating
- Repaved gated yard
- Divisible to 1,000 SF or 2,000 SF spaces
- In Culver City Art Gallery District
- FOR LEASE: \$2.10/SF NNN



LANCELOT

COMMERCIAL INDUSTRIAL BROKERAGE