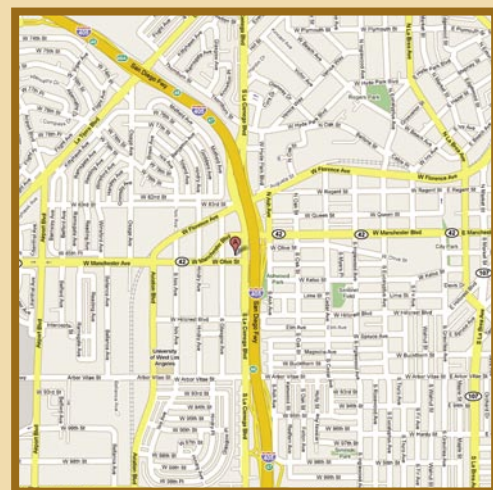
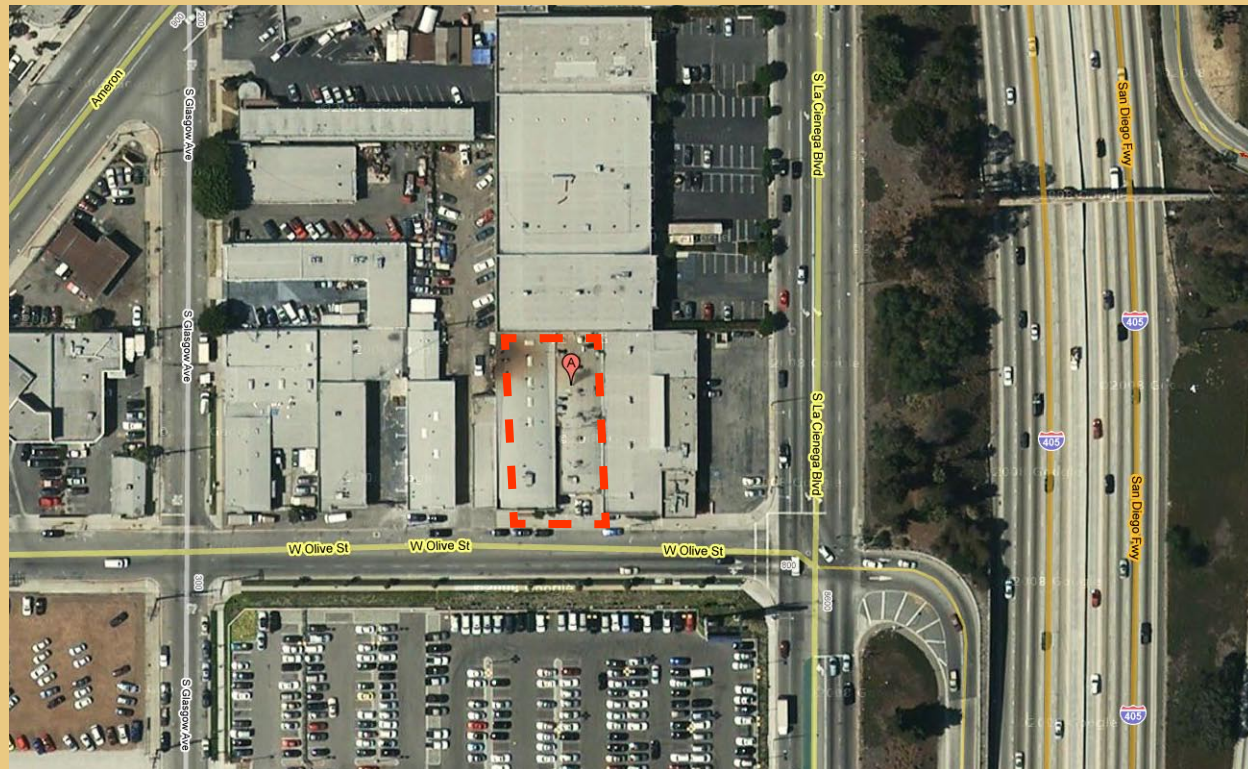


For Lease

821 Olive St., Inglewood, CA



For More Information,

CONTACT:
tel. 310/839/3333
fax. 310/839/3382
www.lancelotcommercial.com

Jonathan Wolk, Senior Associate
jw_california@yahoo.com

OFFICE LOCATION

8924 Lindblade Street
Culver City, CA 90232

NOTE: All measurements are approximate and while the information furnished comes from reliable sources, we assume no liability.

"Regardless of the professional broker you choose, it is critical to have a broker who is well versed in all aspects of the market in which you are dealing. You will not find a better brokerage company than Lancelot Commercial with this kind of track record."
- Lance Levin, President & Jonathan Wolk, Senior Associate

For Lease

821 Olive St., Inglewood, CA



Great LAX Industrial Building

AVAILABLE SF: 7,500 SF

FEATURES

- Great industrial building with parking for up to 20 cars
- Open floor plan and 12' ceiling
- Potential for automotive, warehouse, storage
- Just minutes to LAX, Westside, and Southbay
- Half block to La Cienega and the 405 Freeway on/off ramp
- For Lease: \$0.800 PSF/gross



LANCELOT
COMMERCIAL INDUSTRIAL BROKERAGE