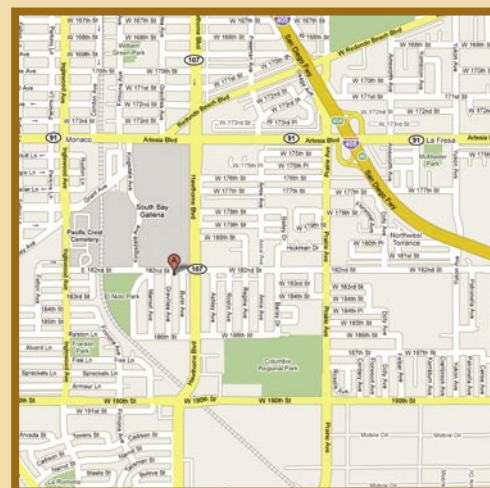
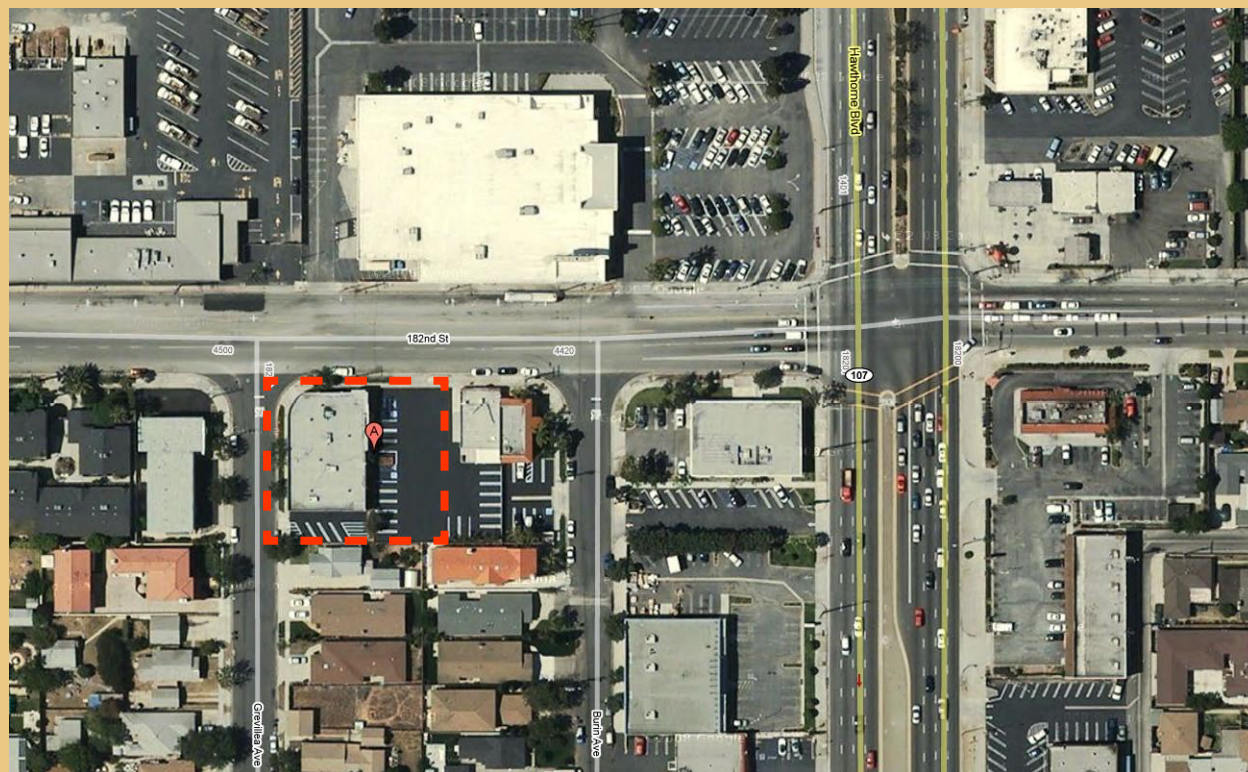


For Lease

4450 W. 182nd St., Torrance CA



FOR MORE INFORMATION,

CONTACT:
tel. 310/839/3333
fax. 310/839/3382
www.lancelotcommercial.com

LANCE LEVIN, PRESIDENT
lance@lancelotcommercial.com

OFFICE LOCATION

8924 Lindblade Street
Culver City, CA 90232

NOTE: All measurements are approximate and while the information furnished comes from reliable sources, we assume no liability.
Lance Levin: DRE # 01128388 Jonathan Wolk: DRE# 01228058



"Regardless of the professional broker you choose, it is critical to have a broker who is well versed in all aspects of the market in which you are dealing. You will not find a better brokerage company than Lancelot Commercial with this kind of track record."
- Lance Levin, President & Jonathan Wolk, Senior Associate

For Lease

4450 W. 182nd St., Torrance CA



Terrific Freestanding Building

AVAILABLE SF: 6,600 SF

LAND SF: 17,550

FEATURES

- Good for many uses - retail / office / flex
- Fully air conditioned
- Potential for yoga, school, or gym.
- Highly improved interior with hardwood floors
- Major boulevard exposure
- Clear span with six private offices
- 4/1000 parking - gated parking potential
- 1 Block from Galleria South Bay
- 1 mile to 405 Freeway on/off ramp at Hawthorne to the North
- 1 mile to 405 Freeway on/off ramp at Artesia to the East
- Centrally located between Redondo & Hermosa Beach, Torrance and Lawndale.
- Lease \$1.55 NNN



LANCELOT
COMMERCIAL INDUSTRIAL BROKERAGE