

For Sub-Lease

11111 W. Olympic Blvd., Los Angeles



FOR MORE INFORMATION,

CONTACT:
tel. 310/839/3333
fax. 310/839/3382
www.lancelotcommercial.com

LANCE LEVIN, PRESIDENT
lance@lancelotcommercial.com

OFFICE LOCATION
8924 LINDBLADE STREET
CULVER CITY, CA 90232

NOTE: All measurements are approximate and while the information furnished comes from reliable sources, we assume no liability.
Lance Levin: DRE # 01128388 Jonathan Wolk: DRE# 01228058

"Regardless of the professional broker you choose, it is critical to have a broker who is well versed in all aspects of the market in which you are dealing. You will not find a better brokerage company than Lancelot Commercial with this kind of track record."
- Lance Levin, President & Jonathan Wolk, Senior Associate

For Sub-Lease

11111 W. Olympic Blvd., Los Angeles

Retail Office Medical

AVAILABLE SF: 2,650-5,000 SF



FEATURES

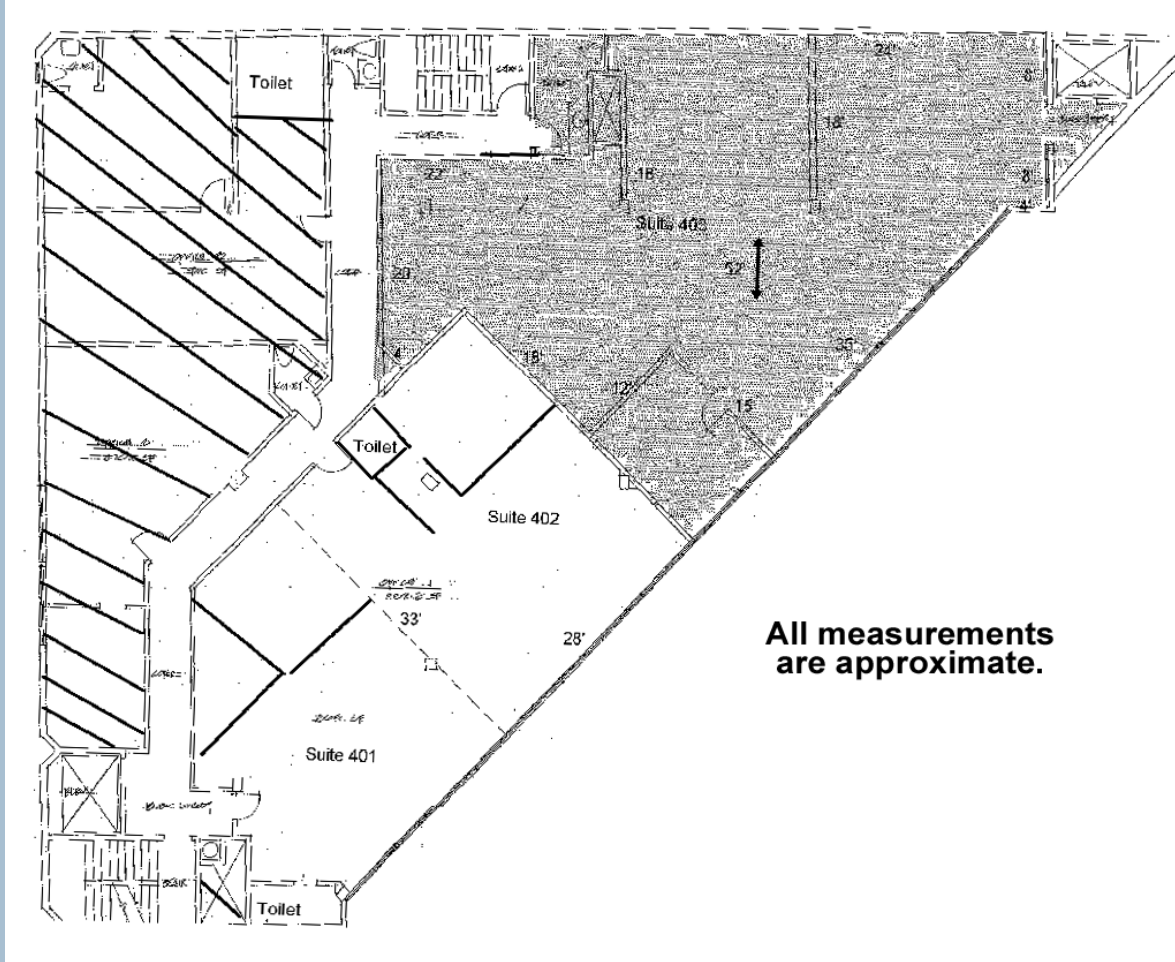
- Open space design with 4 private offices
- Window line space with high ceilings and views
- Private elevator entrance and second public elevator
- Major boulevard exposure at corner location
- Up to 25 parking stalls
- 2 Blocks to 405 Freeway on/off ramp @ Santa Monica Blvd.
- Longer-term available through ownership
- For Lease: \$3.00 per SF gross



LANCELOT
COMMERCIAL INDUSTRIAL BROKERAGE

For Sub-Lease

11111 W. Olympic Blvd., Los Angeles



LANCELOT
COMMERCIAL INDUSTRIAL BROKERAGE